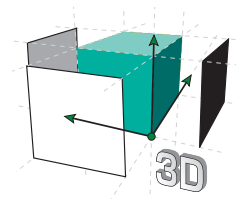


Kethy

Kubica Hinge

CONCEALED
HINGES



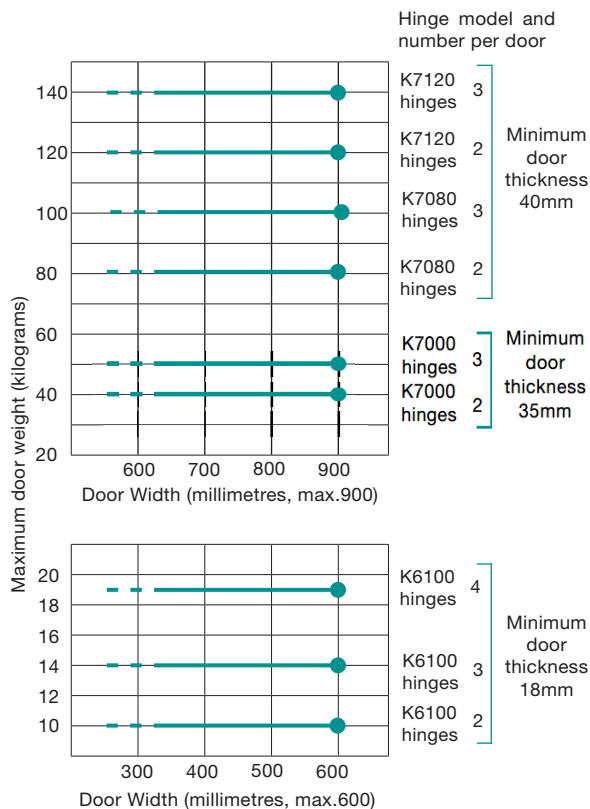
Great Adjustability

180° Opening



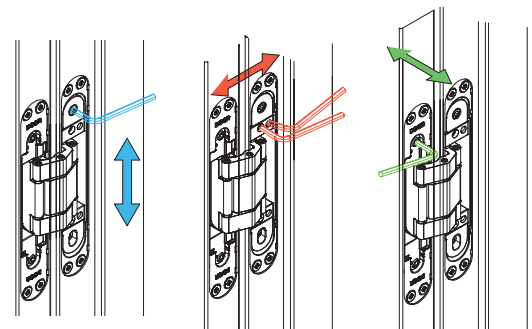
K6100 in black, others in satin chrome plus K7000 now also in black

KUBICA hinge selection guide

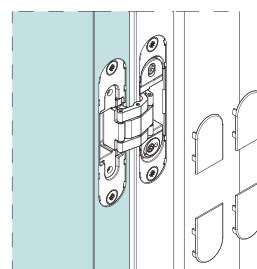


Note: different dimensions and load ratings

3 Axis of Adjustment



Simple adjustment in three directions vertical, horizontal and depth allow for perfect alignment.



Cover Caps

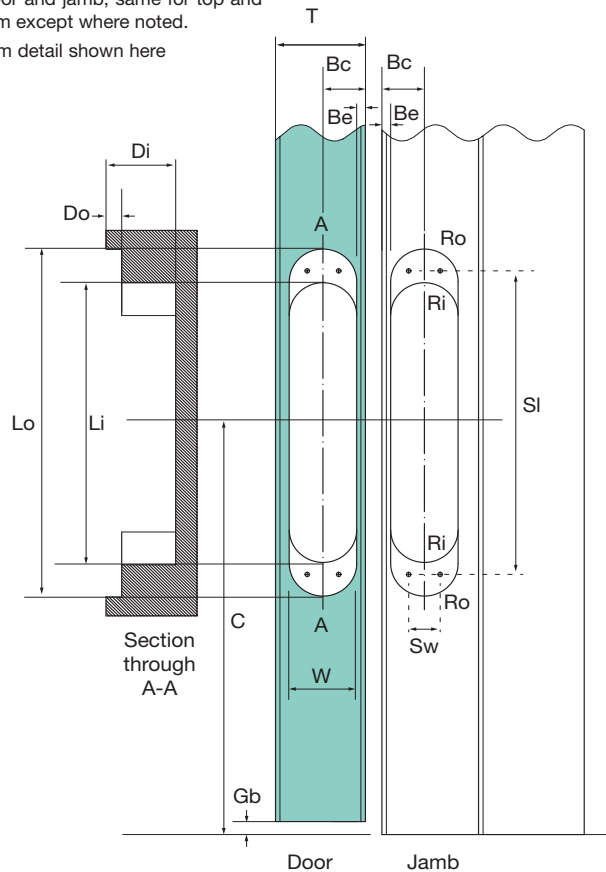
Once the door is perfectly aligned simply push in the cover caps to give a clean and streamlined finish.

GREG STEELE TRADING PTY. LTD.

UNIT 15, 29/33 WARATAH STREET, KIRRAWEE, NSW, 2232 PHONE: 02 9542 4991 FAX: 02 9542 4662 www.kethy.com

Installation Cutout Detail

Installation cutout detail is the same for door and jamb, same for top and bottom except where noted.
Bottom detail shown here



Kethy's range of concealed hinges allow for a 180° opening while maintaining a neat and attractive appearance.

The K6100 are suitable for cabinet and furniture doors.

For larger doors please see table below.

Installation details (all dimensions in mm)			Kubica hinge model				Dimension tolerances	
			K6100	K7000	K7080	K7120		
Minimum door thickness		T	18	35	40	40	-	
Cutout dimensions	Width	W	14	26	30	32	+0.5/-0	
	Length	outer	Lo	72	120	160	200	+0.5/-0
		inner	Li	45	88	129	167	+0.5/-0
	Depth	outer	Do	5.5	4.5	7	8	+0/-0.2
		inner	Di	16	22.5	31	33.5	+1.0/-0
	End radius	outer	Ro	7	13	15	16	+0.25/-0
inner		Ri	*5	13	15	16	+0.25/-0	
Cutout positioning (NB positioning on door = positioning on jamb less gap)	Backset to centre of cutout	Bc	*9	17	19	20	+0/-0.2	
	Backset to edge of cutout	Be	2	4	4	4	+0/-0.2	
	Cutout centre on jamb - up/ down	C	90	190	190	190	-	
Door positioning - vertical	Gap above door - minimum	Ga	2.5	3	3	3	-	
	Gap below door - minimum	Gb	2.5	6	6	6	-	
	Adjustment - up/down		+/-1.5	+/-2	+/-3	+/-3	-	
Door positioning - horizontal	Gap door to jamb, middle setting	Gj	2.5	3.5	3.5	3.5	-	
	Adjustment - out/back		+/-1.5	+/-2	+3/-2	+3/-2	-	
Door positioning - depth	Adjustment - out/in		+/-1	+/-1	+/-1	+/-1	-	
Screw fixings	number per hinge		4	4	8	8	-	
	spacing - length	SI	55	107	140	180	+/-0.1	
	spacing - width	Sw	na	na	14	14	+/-0.1	

Notes:

* Ri for K6100 has different tolerances: maximum 5.00mm radius, may be smaller.

* Bc = 9mm & Be = 2mm for K6100 hinge is given for door 18mm thick. For door >=20mm thick, use Bc = 10mm and Be = 3mm.